



A feed additive consists of plant extracts to improve protein absorption in broilers

## Philogreen

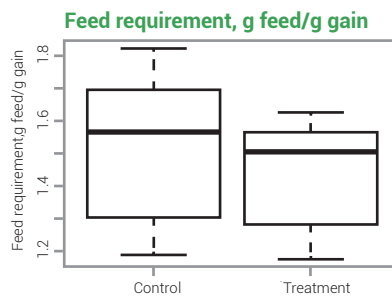
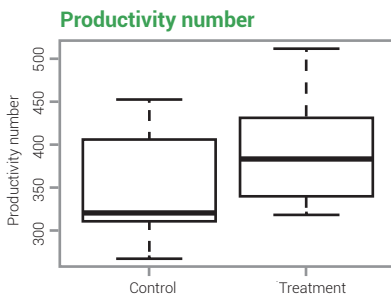
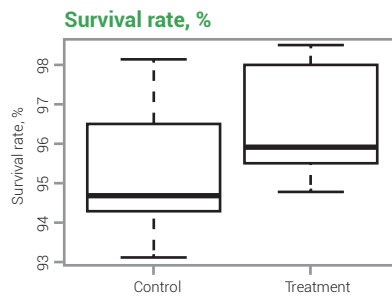
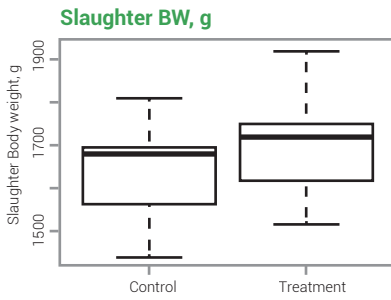
- 01 Specialized for broiler
- 02 Fast weight gain
- 03 Consists of plant extracts containing plenty of polyphenols
- 04 Improves feed efficiency and productivity
- 05 Better litter quality
- 06 Provides good palatability with unique flavor and taste
- 07 Easy to apply by blending in premix or feeds



Recommended dosage / usage: 1kg per ton of feed

## Field experiment

Philogreen 1 kg per ton of feed, for 20 days (early growth – slaughter), total 3 farms

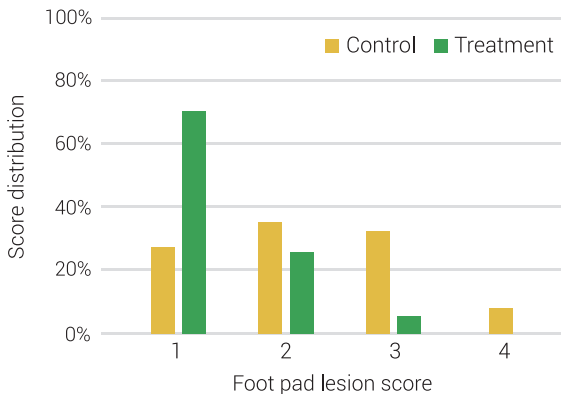


— : Mean of three farms.

| Items/Groups        | Control          | Philogreen       | P value |
|---------------------|------------------|------------------|---------|
| Body weight         | 1632.86 ± 123.83 | 1702.86 ± 118.17 | 0.031   |
| Feed requirement    | 1.51 ± 0.23      | 1.43 ± 0.18      | 0.047   |
| Survival rate       | 95.32 ± 1.73     | 96.45 ± 1.52     | 0.081   |
| Productivity number | 352.74 ± 62.05   | 390.14 ± 58.94   | 0.030   |

- Improved in slaughter body weight
- Higher productivity number
- Better feed efficiency
- Higher survival rate

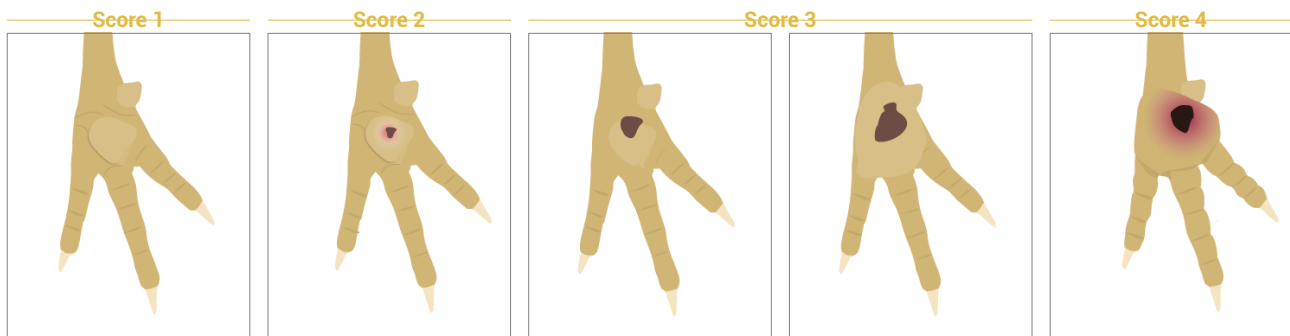
## Foot pad lesion score



| Groups/Items | Mean scores | P value  |
|--------------|-------------|----------|
| Control      | 2.18        | < 0.0001 |
| Philogreen   | 1.36        |          |

\* 100 birds in each group was randomly selected.

## Determination criterion for foot lesion score



**Score 1**  
Small, shiny pink areas and/or peeling or flaking on the chicken's legs and/or feet.

**Score 2**  
Smooth, shiny surfaced, circumscribed areas on the pads of one or both feet.

**Score 3**  
Ulcerations on footpads. Peripheral callus may form.

**Score 3**  
Necrotic plug of tissue present in ulcers. Will be painful and cause mild lameness.

**Score 4**  
Swelling and edema of the tissues surrounding the necrotic debris. Severe lameness is usually present.